



17 Colegate West, Gateshead, NE10 9AH

Offers Over £199,950

Nestled in the sought-after area of Colegate West, Heworth this semi-detached home, extended to the rear, offers a wonderful opportunity for families seeking a versatile space. The proximity to local transport links is ideal. With four generously sized bedrooms, and potential to create a fifth bedroom, this property is perfect for those looking to settle in a friendly neighbourhood. Upon entering, you are greeted by a welcoming hallway that leads to a bright lounge featuring a charming bay window, allowing natural light to flood the room. The dining room provides an ideal setting for family meals and entertaining guests, with sliding doors into a conservatory that provides views over the garden. The modern kitchen, which also overlooks the garden, offers convenient access to the garage with a useful utility space making it easy to manage daily tasks. A ground floor w/c adds to the practicality for family life. The first floor boasts four spacious bedrooms, one of which could be easily divided to create a fifth bedroom if required. The bathroom is complemented by a separate W.C. Outside, the property features a fully enclosed rear garden, perfect for children to play or for hosting summer barbecues. The front garden adds to the curb appeal, while the driveway and garage with remote control door provide valuable off-street parking. Colegate West is a lovely area that overlooks a green, creating a peaceful atmosphere. While the home requires some cosmetic updating, it presents a fantastic opportunity to create a personalised living space in a desirable location. This spacious residence is not to be missed and is sure to attract interest from those looking for a lovely family home. No Chain.

PORCH

8'11" x 2'0" (2.73 x 0.63)

ENTRANCE HALLWAY

5'8" x 14'0" (1.75 x 4.29)



SUN ROOM

8'7" x 7'6" (2.62 x 2.31)



KITCHEN

7'2" x 16'4" (2.20 x 5.00)

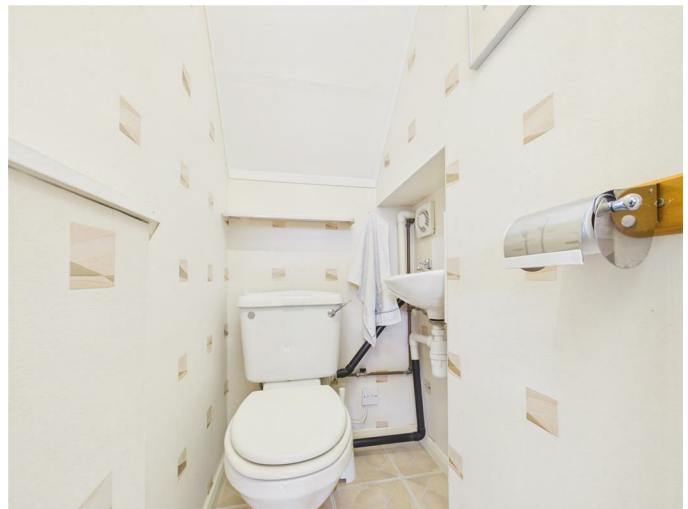


LOUNGE

12'5" x 12'8" (3.81 x 3.88)



GROUND FLOOR W.C.



DINING ROOM

8'5" x 20'1" (2.59 x 6.14)



ACCOMMODATION FIRST FLOOR



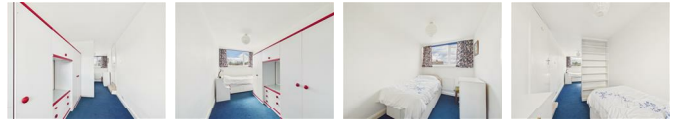
BEDROOM ONE

10'8" x 10'9" (3.26 x 3.28)



BEDROOM FOUR (IN EXTENSION)

6'7" x 22'11" (2.03 x 7.00)



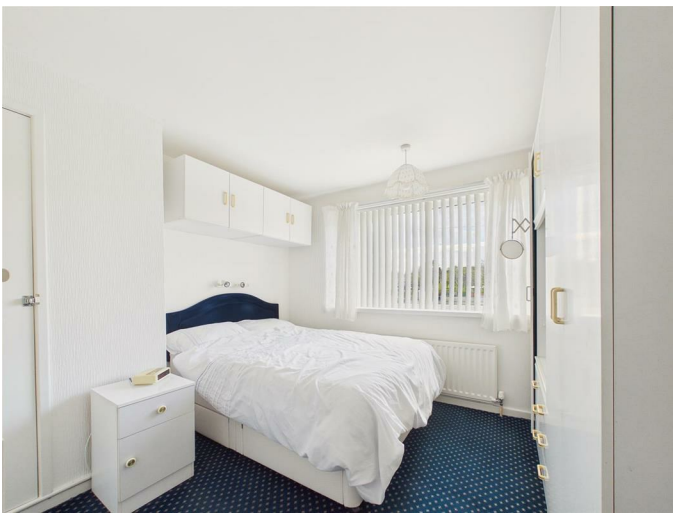
FAMILY BATHROOM

5'4" x 5'4" (1.65 x 1.63)



BEDROOM TWO

9'10" x 11'11" (3.02 x 3.64)



SEPARATE W.C.

2'9" x 5'5" (0.84 x 1.66)



BEDROOM THREE

7'6" x 7'4" (2.29 x 2.25)



EXTERNAL



GARAGE WITH UTILITY

6'9" x 23'3" (2.06 x 7.10)



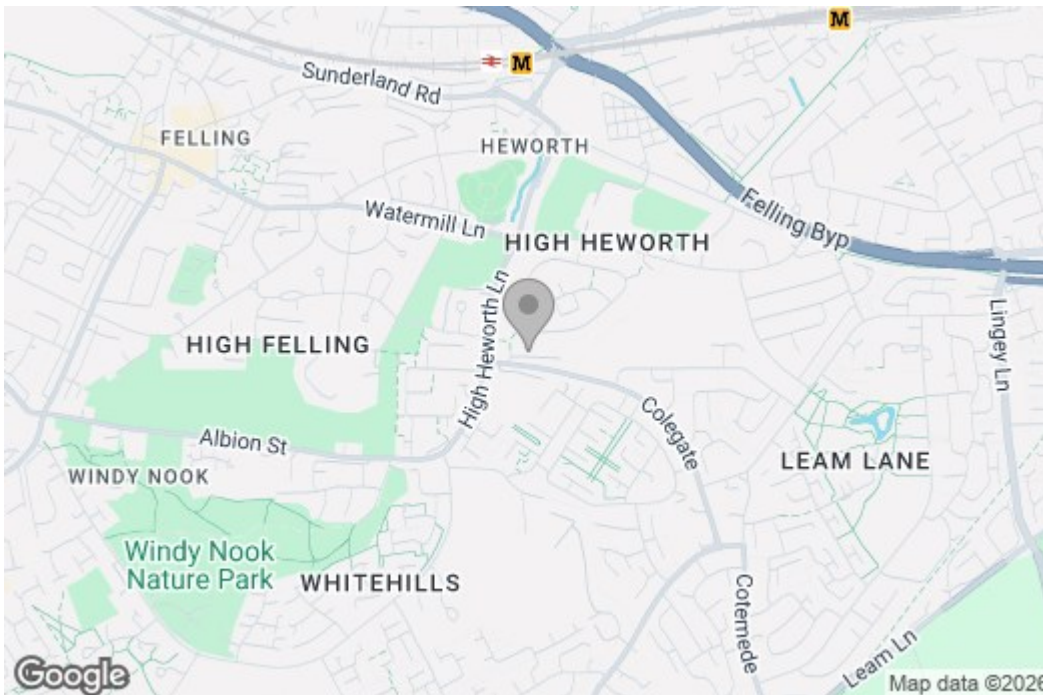
Property disclaimer

IMPORTANT NOTE TO PURCHASERS: We endeavour to make our sales particulars accurate and reliable, however, they do not constitute or form part of an offer or any contract and none is to be relied upon as statements of representation or fact. The services, systems and appliances listed in this specification have not been tested by us and no guarantee as to their operating ability or efficiency is given. All measurements have been taken as a guide to prospective buyers only, and are not precise. Floor plans where included are not to scale and accuracy is not guaranteed. If you require clarification or further information on any points, please contact us, especially if you are travelling some distance to view. Fixtures and fittings other than those mentioned are to be agreed with the seller. We cannot also confirm at this stage of marketing the tenure of this house.

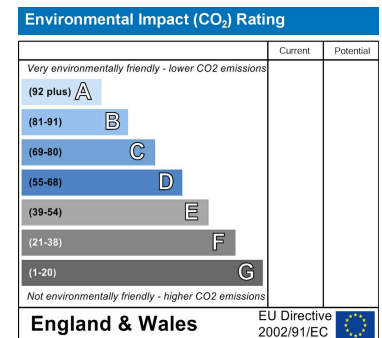
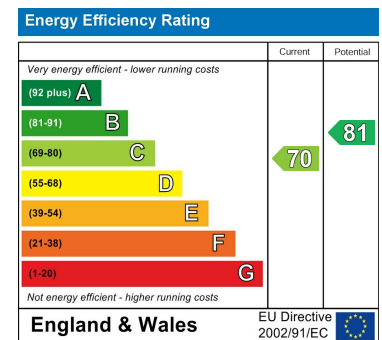
Floor Plan



Area Map



Energy Efficiency Graph



These particulars, whilst believed to be accurate are set out as a general outline only for guidance and do not constitute any part of an offer or contract, purchaser should not rely on them as statements of representation of fact, but must satisfy themselves by inspection or otherwise as to their accuracy. No person in this firm's employment has the authority to make or give an representation or warranty in respect of the property.